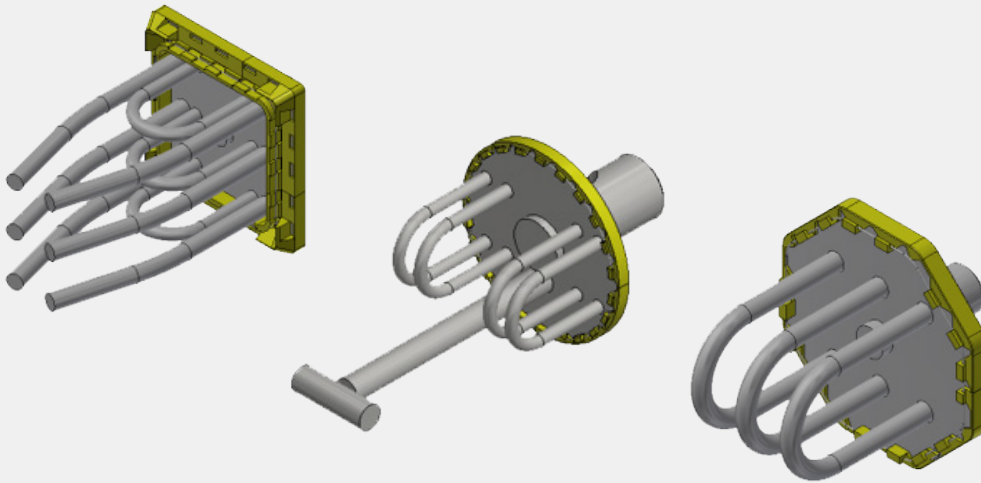


## QUICK SEALING DEVICE



**QSD**  
**>Safe, Quick,  
 Reliable<**

### Benefits

— **Safe and perfect union between cast steel and dummy bar, preventing liquid steel from leaking**

— **Risk free by avoiding handling operations between tundish and mould**

— **Quick operation by saving time in strand preparation works**

— **Significant reduction of the air whistle noise**

— **Perfect self-positioning**

— **Applicable to any CCM**

### Main features

— The Quick Sealing Device protects the dummy bar head from liquid steel

— A customized solution that cools down the steel, makes a firm connection with the solidified steel and is firmly linked to the dummy bar head at the same time

— Properly adjusting and fitting, avoiding damages to the mould

— Easy and fast release

— The Quick Sealing Device standard range is for billet dimensions from 120x120 mm, 4.725" square, to 200x200 mm, 7 7/8". Customized solutions may be also provided case by case

— All the units have been designed to protect the copper mould tube during

dummy bar insertion, to provide a perfect seal avoiding any outflow of liquid steel

### Connection

— The QSD is ready to be placed inside the cooling chamber (below the mould) immediately after being connected to the dummy bar

— This position provides an easy and controlled insertion into the mould and avoids dangerous manual manipulations

— The limited weight of the QSD complies with standard safety regulation for the manual handling operations

